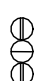


UXBRIDGE BRANCH 1948

	Long Range Two Aspect (Green-Red) Colour Light Signal. Semi-Automatic.		Long Range Two Aspect (Green-Red) Colour Light Signal. Automatic.
	Long Range Two Aspect (Green-Red) Colour Light Signal (Semi-Automatic) and Two Aspect (Green-Yellow) Colour Light Repeater Signal.		Long Range Two Aspect (Green-Red) Colour Light Signal (Automatic) and Two Aspect (Green-Yellow) Colour Light Repeater Signal (Automatic).
	Long Range Two Aspect (Green-Yellow) Colour Light Signal Repeater. Semi-Automatic.		Long Range Two Aspect (Green-Yellow) Colour Light Signal Repeater. Automatic.
	Long Range Two Aspect (Green-Red) Colour Light Signal. Semi-Automatic. Approach Lit.		Short Range Colour Light (Green-Yellow or White-Yellow) Fog Repeating Signal
	Short Range Two Aspect (Green-Red) Colour Light Signal for Subsidiary Moves. Semi-Automatic.		Short Range Colour Light (Green-Yellow or White-Yellow) Fog Repeating Signal with Miniature Junction Indicator.
	Long Range Two Aspect (Green-Red) Colour Light Signal with Illuminated A-Sign. Semi - Automatic.		Externally Illuminated Disc Shunt Signal. Power Operated
	Juction Indicator At Main Line Running Signal.		Externally Illuminated Disc Shunt Signal with Route Indicator. Power Operated
	Derailer		Externally Illuminated Disc Calling-On Signal Power Operated
	Sprung Catch Points		Externally Illuminated Limit of Shunt or Stop Board

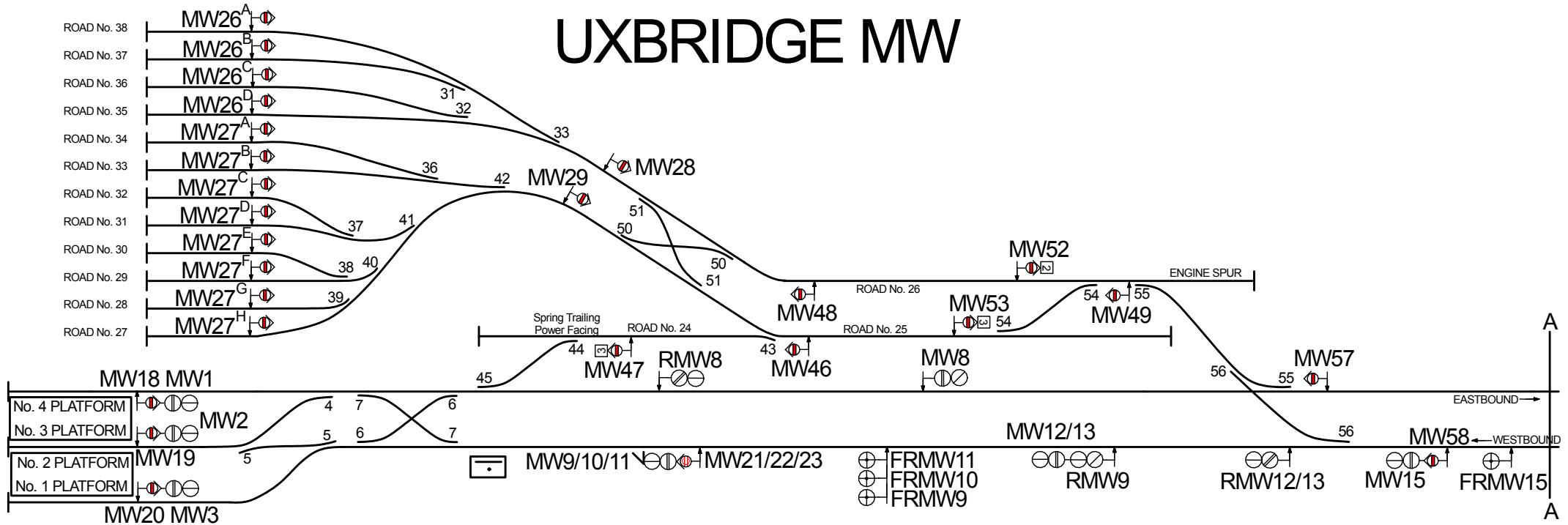
Notes: Uxbridge to Harrow

These Diagrams are redrawn from original signalling notices. The dates of these notices cover a period of 13 years from 1935 to 1948. It therefore cannot be stated categorically that the signalling shown in these diagrams existed as shown at the same time. i.e. there may have been alterations to the signalling shown on the 1935 diagrams between 1935 and 1948 that are not shown on these diagrams.

Specifically the dates of the diagrams are:

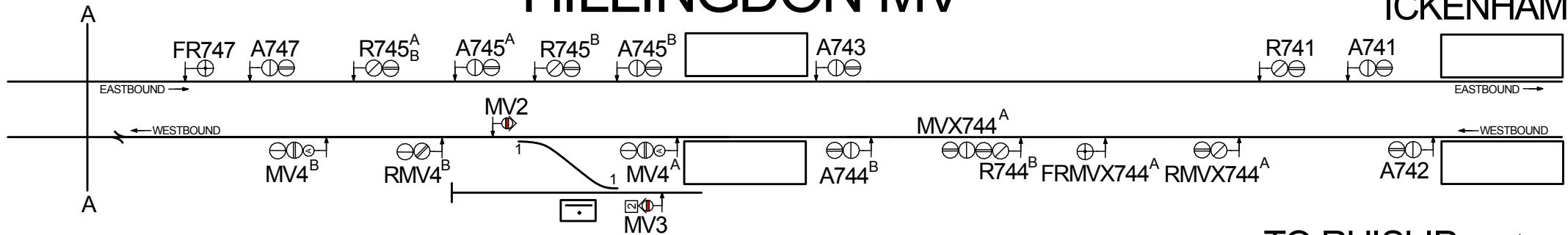
Uxbridge Area 1938/1942
 Uxbridge - Eastcote 1948
 Rayners Lane Area 1935
 Rayners Lane - South Harrow 1935
 Rayners Lane - Harrow on the Hill 1948
 Harrow on the Hill Area 1948

UXBRIDGE MW

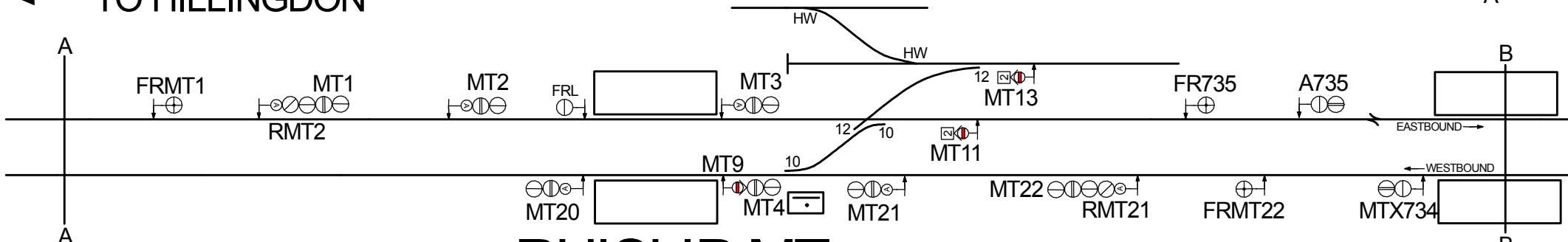
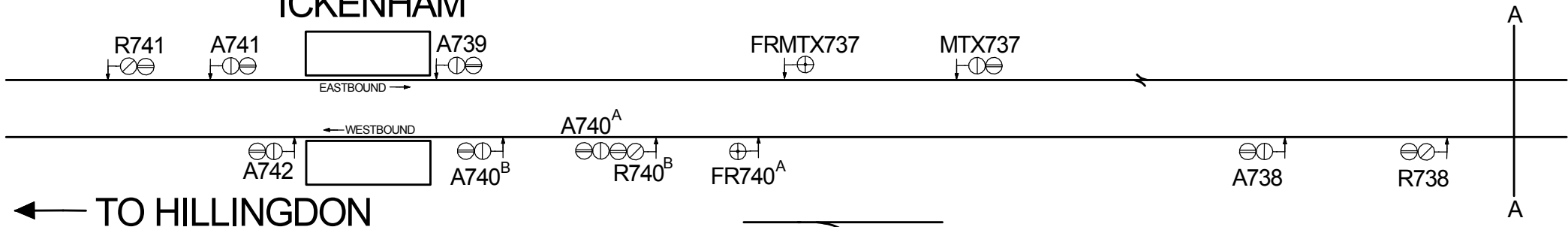


HILLINGDON MV

ICKENHAM



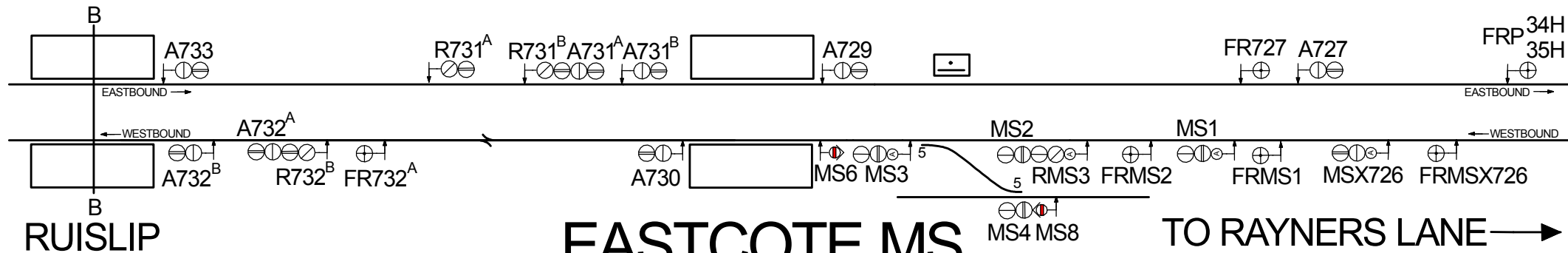
ICKENHAM



RUISLIP MT

King Lever No. 17

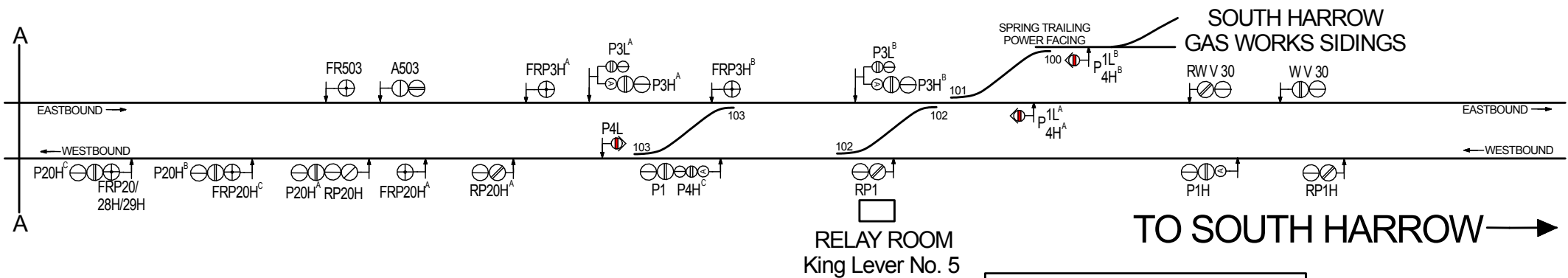
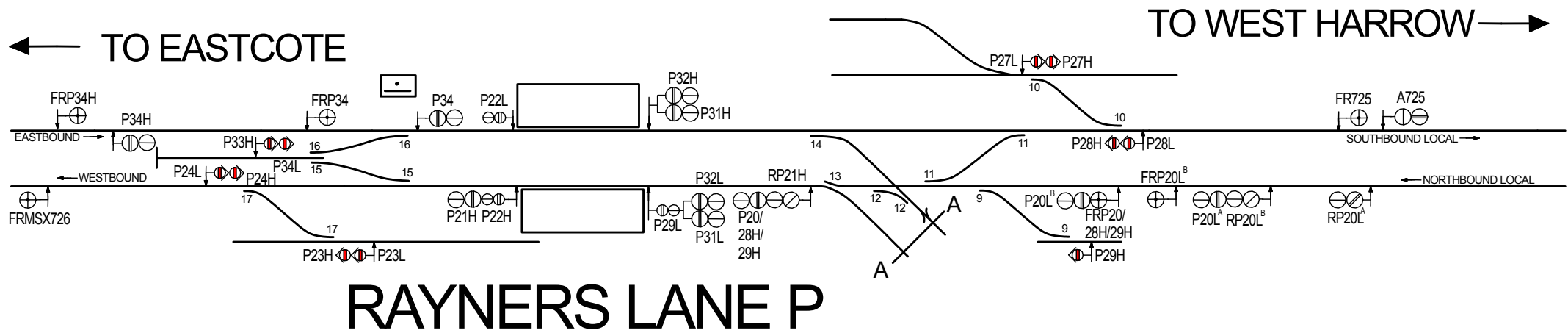
RUISLIP MANOR



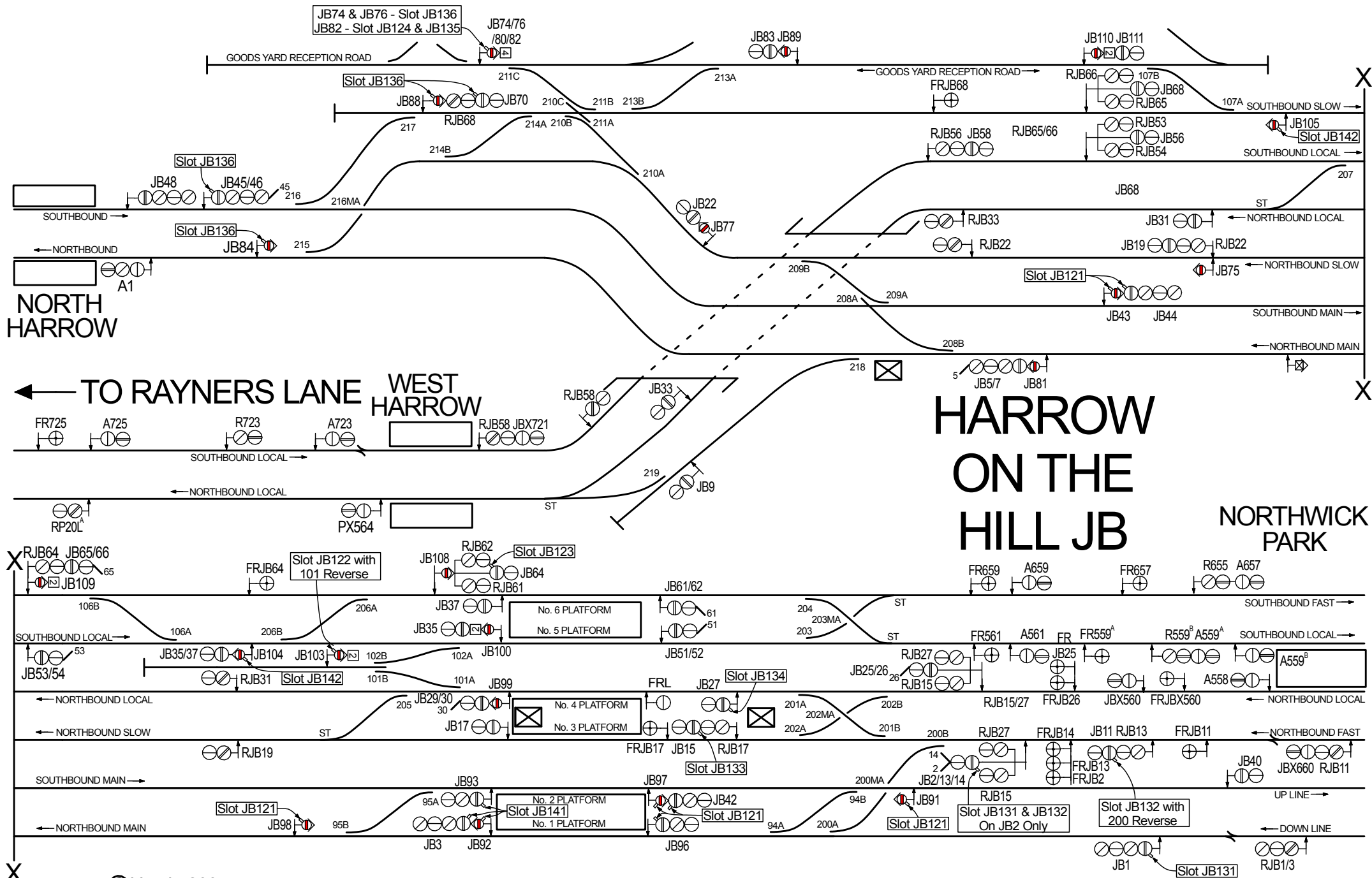
EASTCOTE MS

King Lever No. 7

TO RAYNERS LANE →



Selection of signals P_{4H}^{1A} and P_{4H}^{1B} is by train crew operation of a foot plunger located at the signal concerned.



HARROW ON THE HILL JB

NORTH HARROW

TO RAYNERS LANE WEST HARROW

NORTHWICK PARK